

**Wiring Diagram**

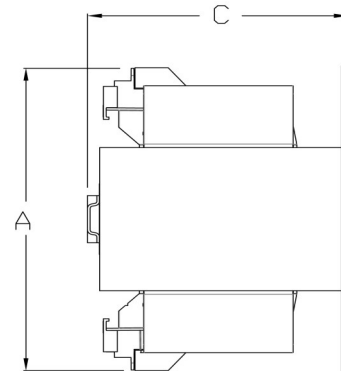
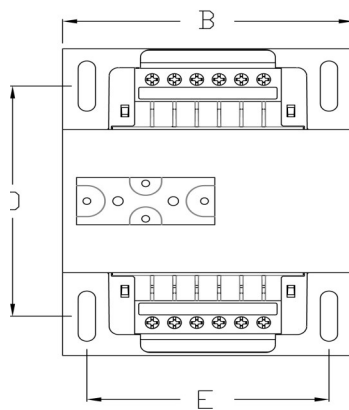


Image is a general representation of a typical MAG Control Transformer without fusing accessories or jumper links. Transformers 50VA - 350VA have 4 terminals per side, and units 500VA and higher have 6 terminals per side.

## ZZ SERIES (Universal Voltage)

PRI	SEC
600/480/416/240	99/120/130
575/460/400/230	95/115/125
550/440/380/220	91/110/120
500/ / /208	85/100/110

### Approximate Dimensions and Weight

VA Rating	MPC Part #	Max Depth (A)	Max Width (B)	Max Height (C)	Mounting Depth (D)	Mounting Depth (E)	Mounting Hole		Shipping
							Depth	Width	Weight (lbs.)
50	MPC2-1B050ZZU-*	4.44	3.00	3.45	2.38	2.81	0.20	0.41	4.20
100	MPC2-1B100ZZU-*	4.90	3.75	4.01	2.88	3.13	0.20	0.41	6.70
150	MPC2-2B150ZZU-*	4.58	4.50	4.64	2.88	3.75	0.20	0.41	10.00
250	MPC2-2B250ZZU-*	5.08	4.50	4.64	3.75	3.75	0.20	0.41	13.60
350	MPC2-2B350ZZU-FO	6.42	5.25	4.66	5.38	4.38	0.31	1.06	28.10
500	MPC2-2B500ZZU-FO	7.75	5.25	4.67	6.13	4.38	0.31	1.06	28.10
750	MPC2-2B750ZZU-FO	6.21	6.38	5.65	4.00	6.13	0.31	1.06	29.80

\* This model is not available with the FO option (Consider F1)

- Change end suffix for added options
- Add C to suffix for the covers

**Notes:**

- Jumper Link and Fuse Clip Height not included
- Add 5/16" to the Depth when fuse clips are included.(50 thru 350VA)
- Add 1/2" to the Height when fuse block is included (1, 2, and 3 poles)
- Add 1 3/8" to the Height when fuse block is included (1, 2, and 3 poles)