

**Wiring Diagram**

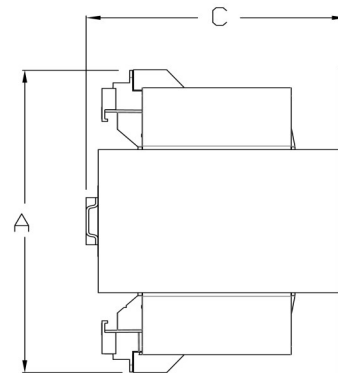
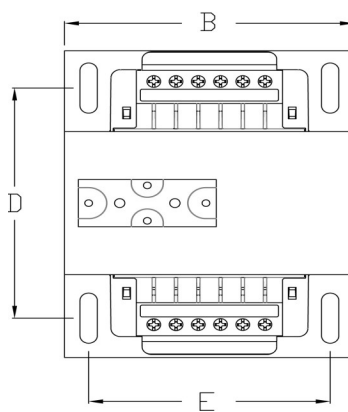


Image is a general representation of a typical MAG Control Transformer without fusing accessories or jumper links. Transformers 50VA - 350VA have 4 terminals per side, and units 500VA and higher have 6 terminals per side.

## ZP SERIES

**PRI**  
380/400/415

**SEC**  
110X220

### Approximate Dimensions and Weight

VA Rating	MPC Part #	Max Depth (A)	Max Width (B)	Max Height (C)	Mounting Depth (D)	Mounting Depth (E)	Mounting Hole		Shipping
							Depth	Width	Weight (lbs.)
50	MPC2-1B050ZPU-*	3.32	3.00	2.79	2.00	2.50	0.20	0.41	2.60
75	MPC2-1B075ZPU-*	3.82	3.00	2.79	2.50	2.50	0.20	0.41	3.50
100	MPC2-1B100ZPU-*	3.78	3.38	3.11	2.38	2.81	0.20	0.41	4.20
150	MPC2-2B150ZPU-*	4.27	3.75	3.42	2.88	3.13	0.20	0.41	6.70
200	MPC2-2B200ZPU-*	4.05	4.50	4.04	2.50	3.75	0.20	0.41	8.50
250	MPC2-2B250ZPU-*	4.55	4.50	4.04	2.88	3.75	0.20	0.41	10.00
300	MPC2-2B300ZPU-*	4.55	4.50	4.04	3.25	3.75	0.20	0.41	11.30
350	MPC2-2B350ZPU-*	5.28	4.50	4.04	3.75	3.75	0.20	0.41	13.60
500	MPC2-2B500ZPU-FO	5.75	5.25	4.66	4.25	4.38	0.31	1.06	16.10
750	MPC2-2B750ZPU-FO	7.00	5.25	4.66	5.38	4.38	0.31	1.06	28.10

\*This model is not available with the FO option (Consider F1)

- Change end suffix for added options
- Add C to suffix for the covers

### Notes:

- Jumper Link and Fuse Clip Height not included
- Add 5/16" to the Depth when fuse clips are included.(50 thru 350VA)
- Add 1/2" to the Height when fuse block is included (1, 2, and 3 poles)
- Add 1 3/8" to the Height when fuse block is included (1, 2, and 3 poles)